

Sinclair  Hammelton



GUIDE PRICE

£600,000

Barnhill Avenue

, BR2 9DP

PROPERTY SUMMARY

GUIDE PRICE £600,000 - £650,000

Nestled in a sought-after residential road, this beautifully presented three bedroom semi-detached home offers the perfect balance of comfort, space and style. Conveniently located close to local schools, great transport links being under a mile to Bromley South and Hayes train Stations.

From the moment you step inside, you're greeted by a bright and airy entrance hall that leads into a spacious living/dining room with large windows, allowing for an abundance of natural light, modern kitchen, conservatory and W/C. Upstairs, the property comprises three well-proportioned bedrooms, as well as a contemporary family bathroom. Outside, the home benefits from a well-maintained garden, a patio seating area and off-street parking.

3



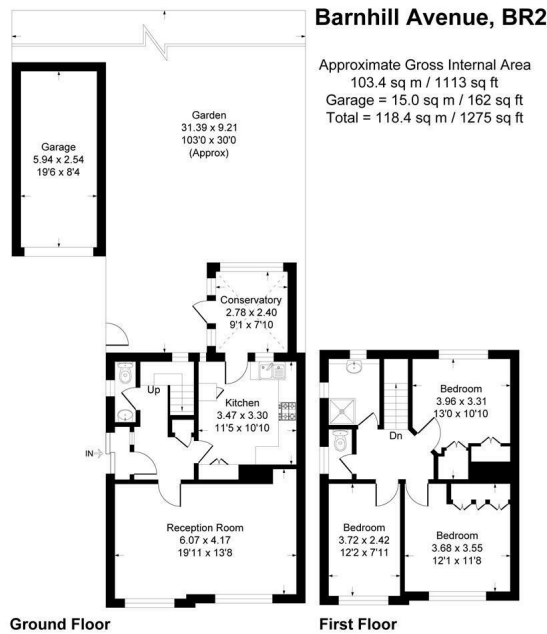
2



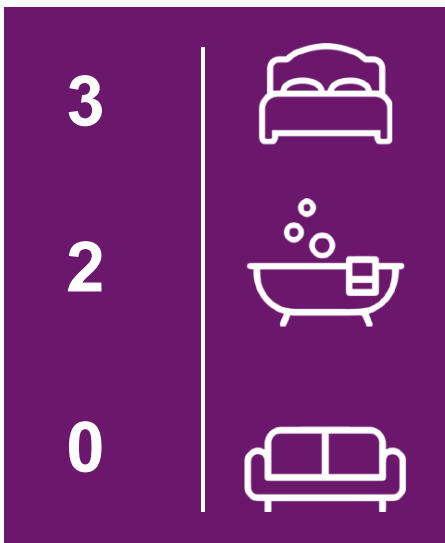
0







This plan is for layout guidance only. Not drawn to scale unless stated. Windows and door openings are approximate. Whilst every care is taken in the preparation of this plan, please check all dimensions, shapes and compass bearings before making any decisions reliant upon them.
 Produced By Flankip



Energy Efficiency Rating		
	Current	Potential
Very energy efficient - lower running costs		
(92 plus) A		
(81-91) B		
(69-80) C	74	80
(55-68) D		
(39-54) E		
(21-38) F		
(1-20) G		
Not energy efficient - higher running costs		
England & Wales	EU Directive 2002/91/EC	

EPC RATING: C COUNCIL TAX BAND: E

Agents Note: Whilst every care has been taken to prepare these particulars, they are for guidance purposes only. All measurements are approximate and are for general guidance purposes only and whilst every care has been taken to ensure their accuracy, they should not be relied upon and potential buyers/tenants are advised to recheck the measurements

Sinclair Hammelton

OFFICE ADDRESS
 23 High Street
 Bromley
 Kent
 BR1 1LG

OFFICE DETAILS
 0208 464 5566
 info@sinclairhammelton.co.uk